



Marsham Street, London  
SW1P

GARTON JONES.COM



Marsham Street, London  
, SW1P

GARTON JONES.COM

49 Marsham Street Sales +44 (0) 20 7340 0480  
London westminster@gartonjones.com  
SW1P 3DP www.gartonjones.com

£525 Per Week

A bright and spacious 1 bedroom furnished apartment located in this luxury development in the heart of Westminster. The accommodation measures at 640 Square feet and comprises of living room with views overlooking St Johns Gardens, a separate modern integrated kitchen, large bedroom with fitted wardrobes and a modern bathroom. Residents enjoy a 24 hour concierge and access to an excellent residents gymnasium with Jacuzzi, Sauna and Treatment Rooms. Marsham Street is centrally located and is just a short distance away from Whitehall, The Houses of Parliament, Westminster Abbey and Buckingham Palace as well as the Tate Gallery and Chelsea College of Arts. The transport links of St James's Park, Westminster and Victoria which are all just a stones throw away as well a selection of bus services to The City and The West End. In the surrounding area there is a choice from a variety of amenities and a selection of many restaurants and cafes

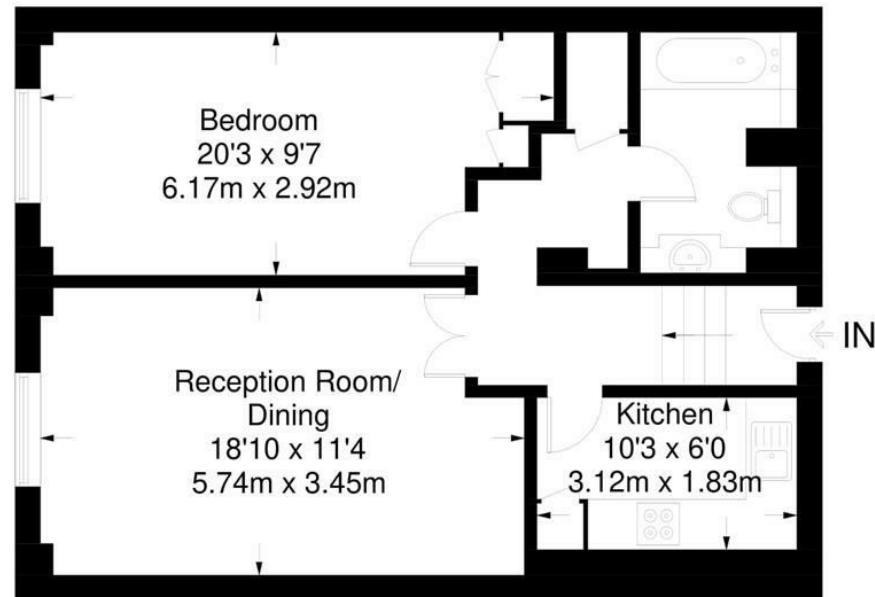
- 1 Bedroom Apartment
- Furnished
- Separate Integrated Kitchen
- Reception Room
- Modern Bathroom
- 640 Square Feet
- High Ceilings Throughout
- 24 Hour Porter
- Residents Gym, Sauna, Jacuzzi and Business Suite
- Close To Many Restaurants, Shops and Transport Links



EPC certificate available on request.

## St. John's Building

Approximate Gross Internal Area = 640 sq ft / 59.5 sq m



Not to scale, for guidance only and must not be relied upon as a statement of fact.  
All measurements and areas are approximate only and have been prepared in  
accordance with the current edition of the RICS Code of Measuring Practice.

